

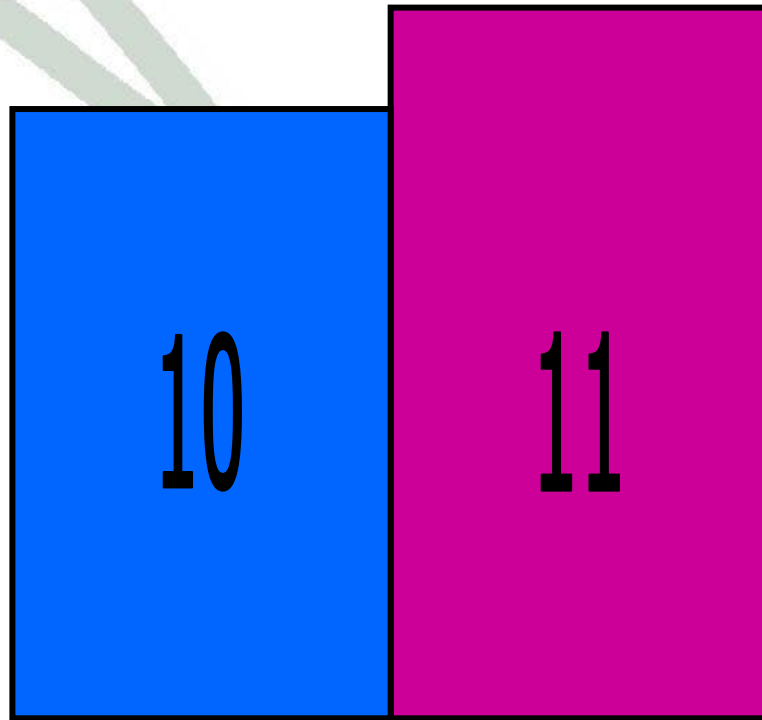


ATENCIÓN DE ENFERMERÍA AL NIÑO PORTADOR DE MARCAPASOS

M^a Cruz Barbarin Morras
Unidad de Arritmias
Hospital Clínic De Barcelona
Institut Clínic Del Tòrax



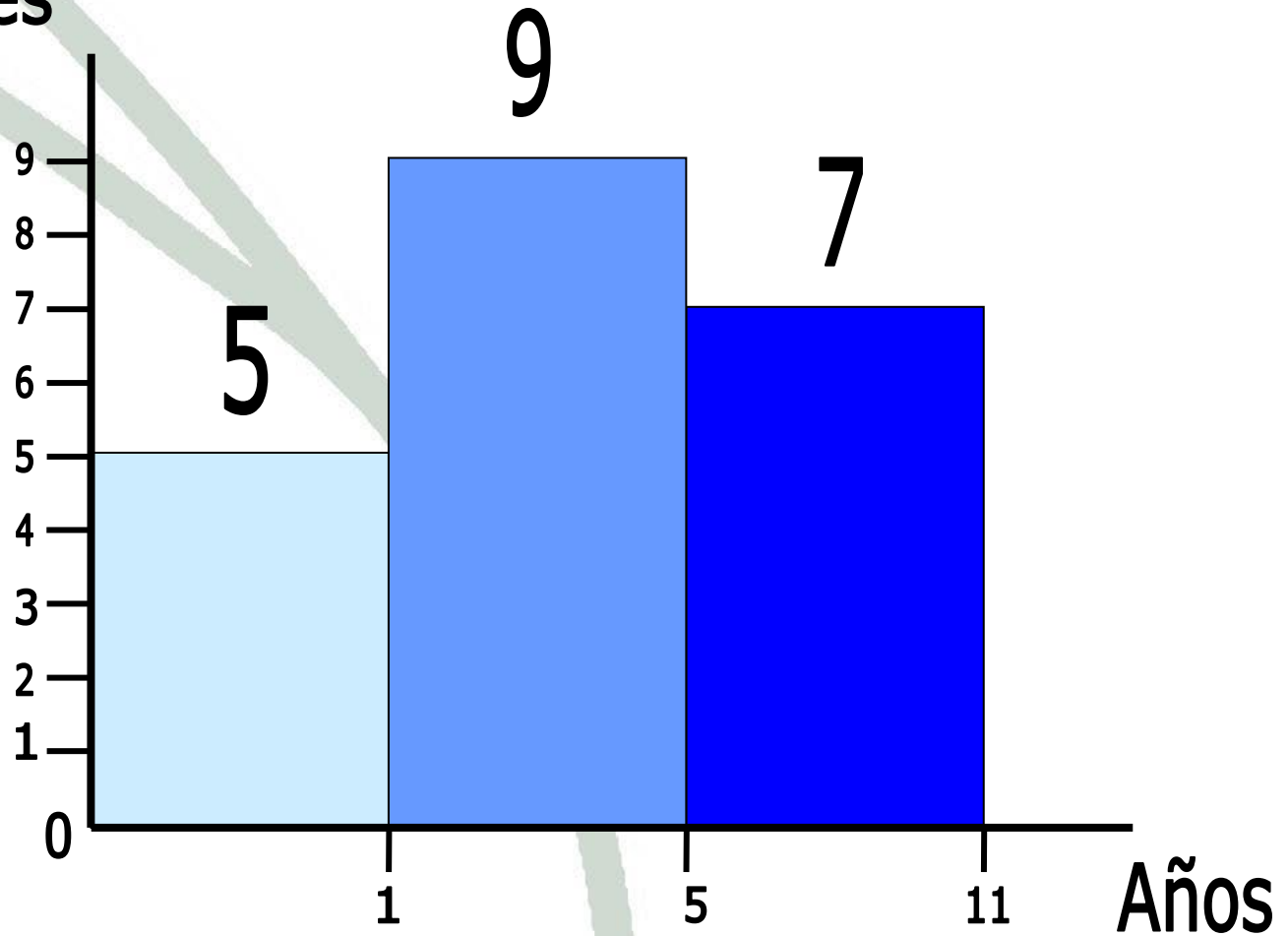
GÉNERO





EDAD

Implantes



DIAGNÓSTICOS

- Cardiopatías Congénitas (19)

- CIV
- CIA
- Transposición Grandes Arterias
- Coartación Grandes Vasos
- Coartación Aorta
- Valvulopatía

10 Casos de
BAV

Post-cirugía
9 BAV congénito

- BAV Completo (1)

- ENS con Taquicardia (1)

MODULO MCP IMPLANTADOS

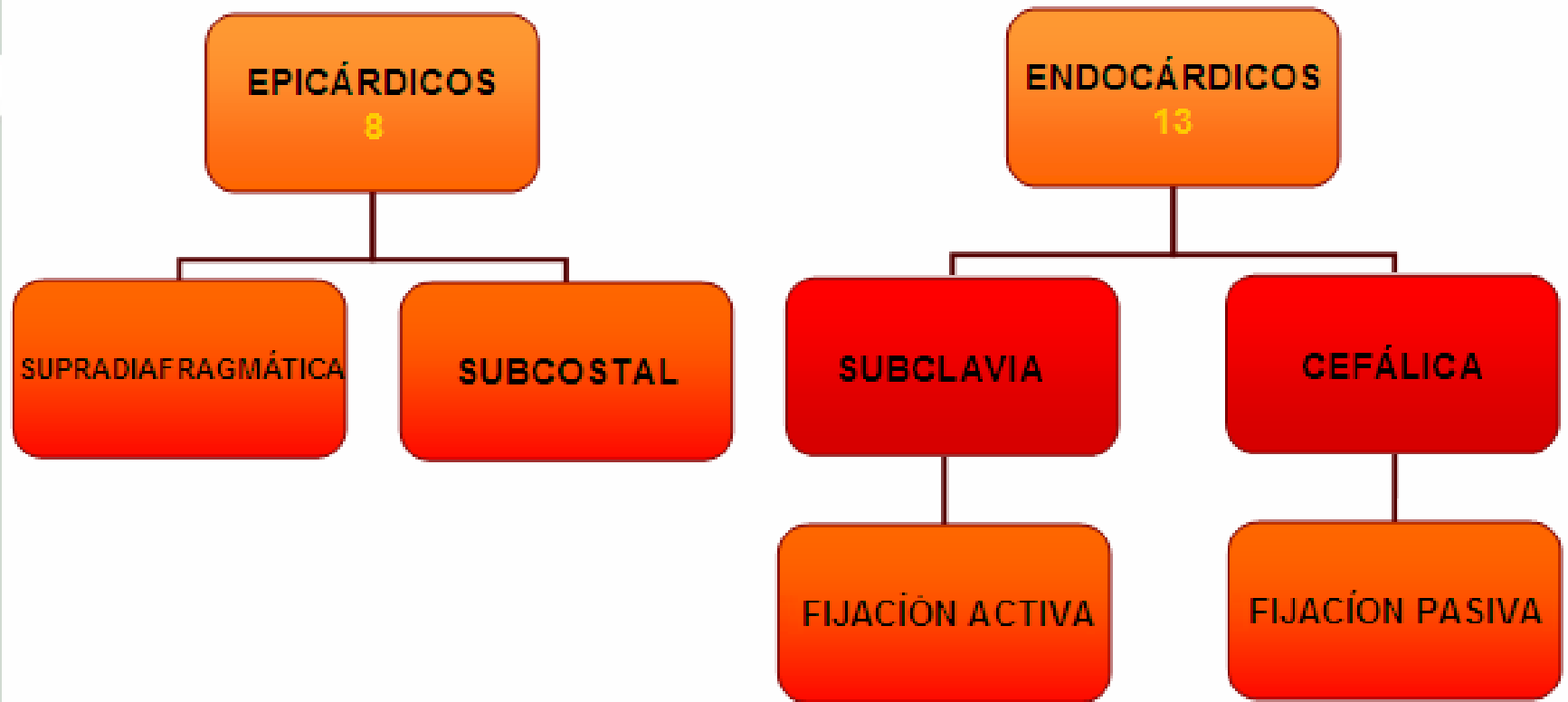
13

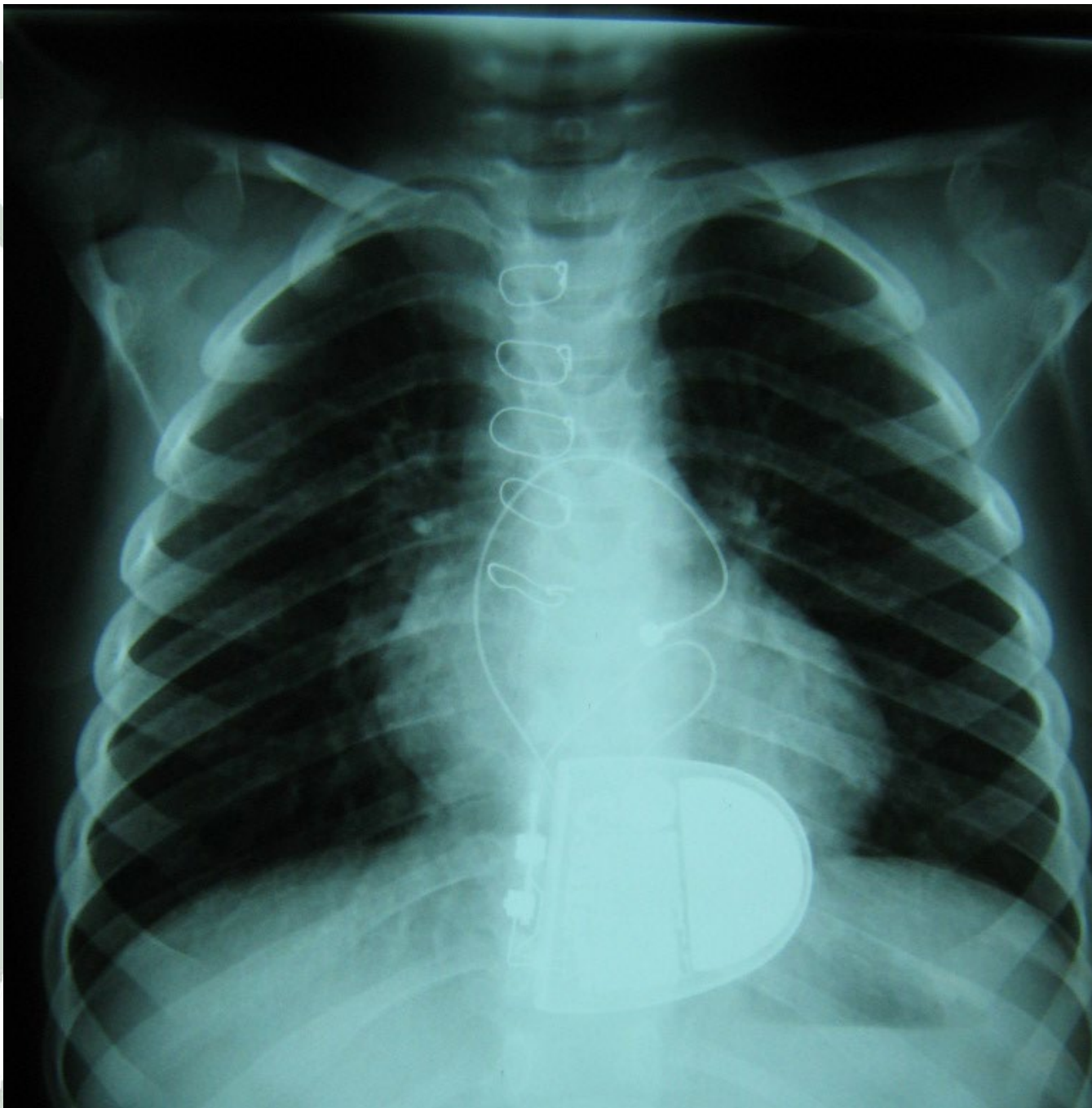
VVIR

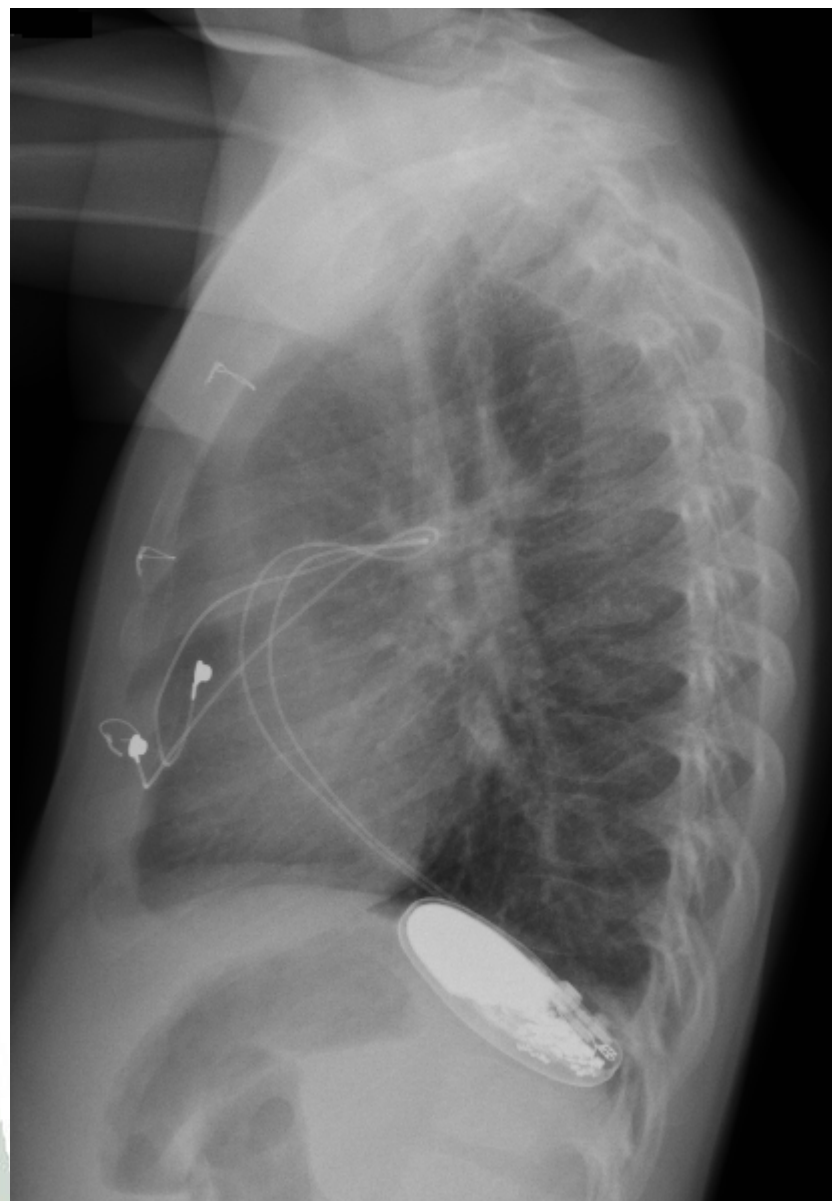
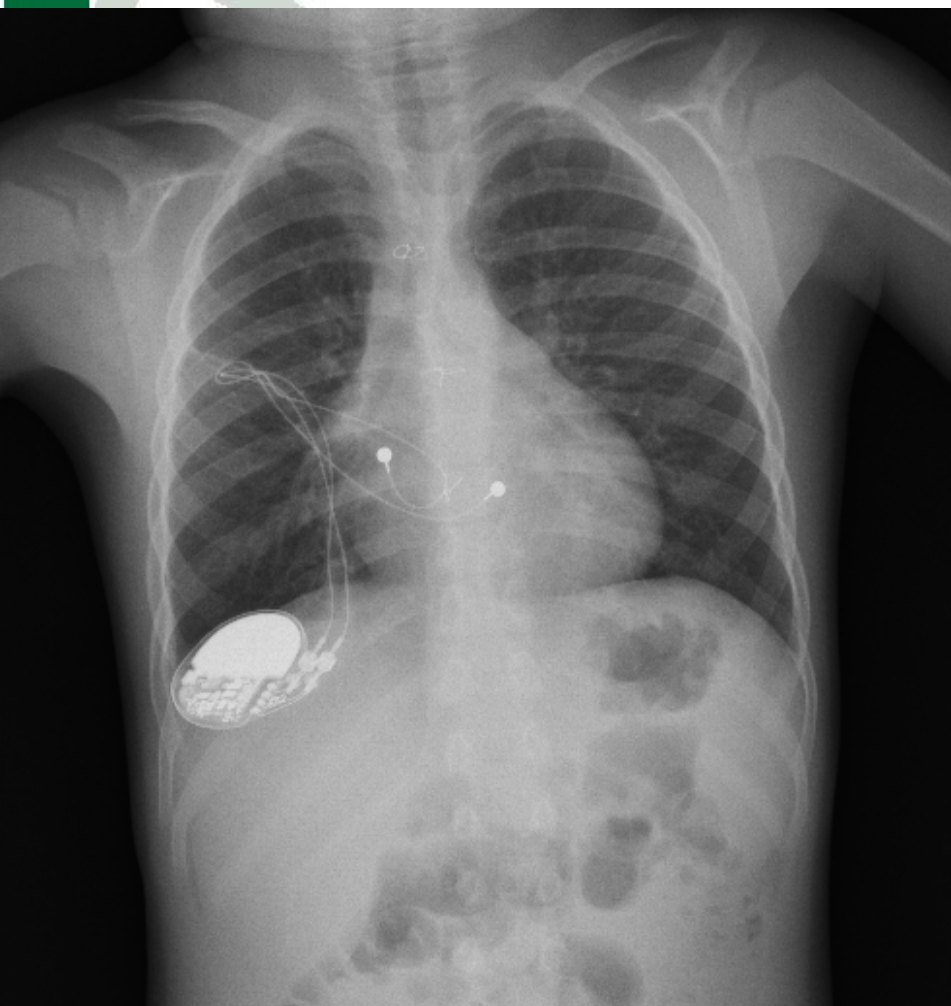
8

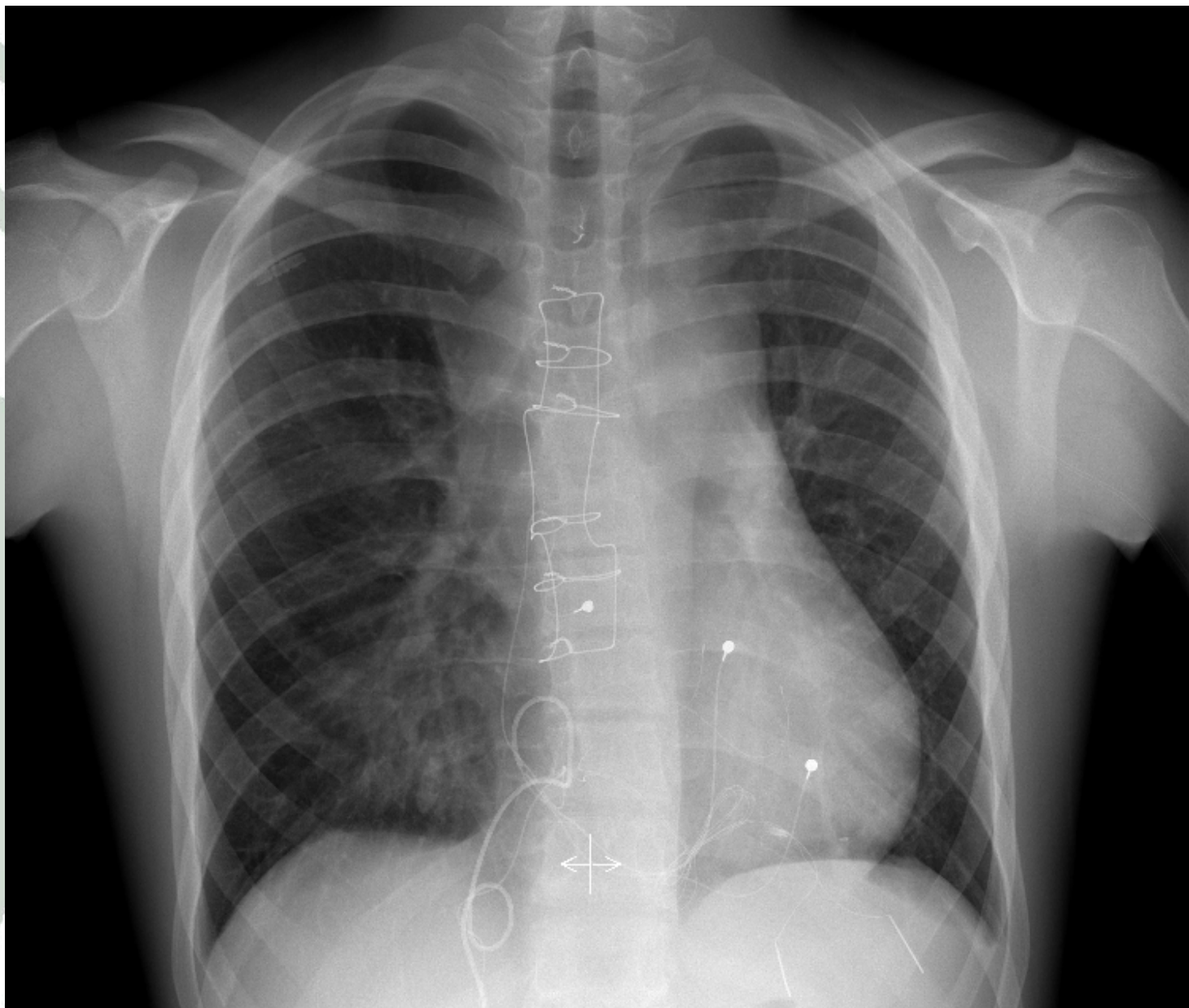
DDDR

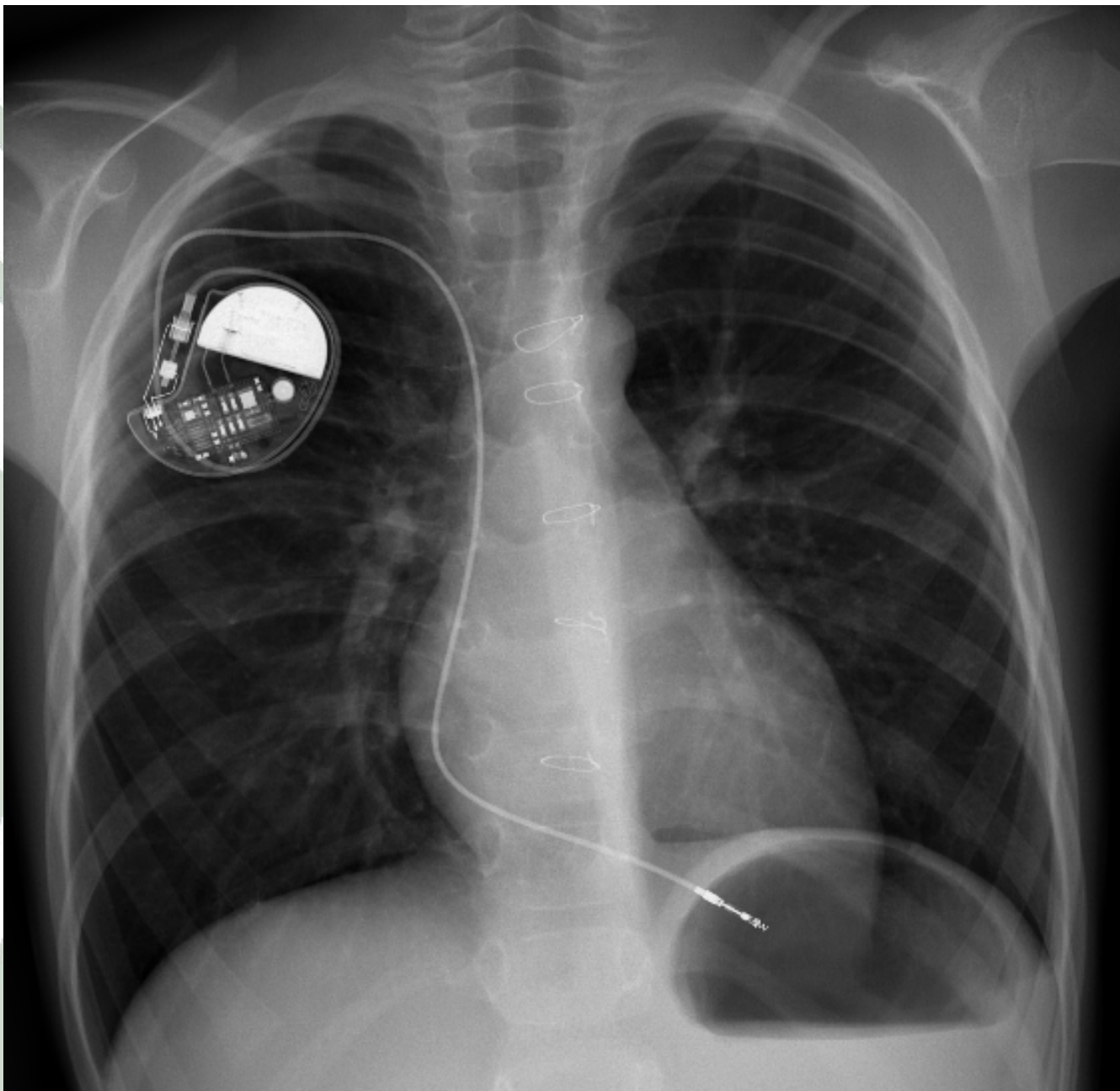
ELECTRODO Y VÍA UTILIZADA





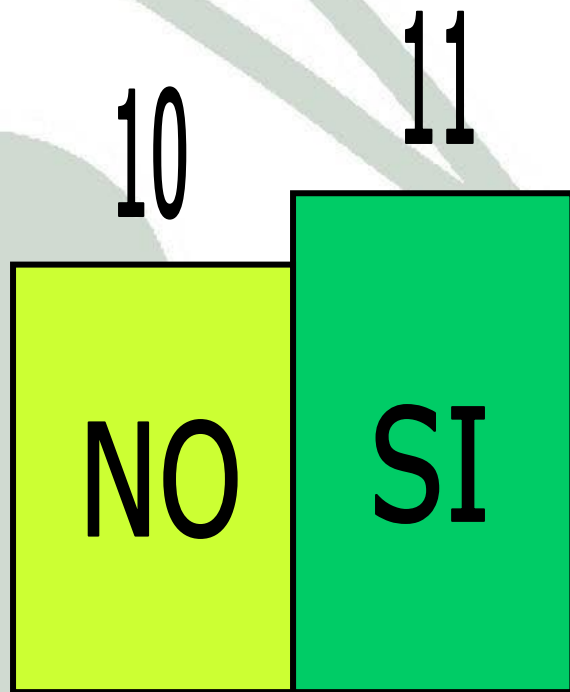




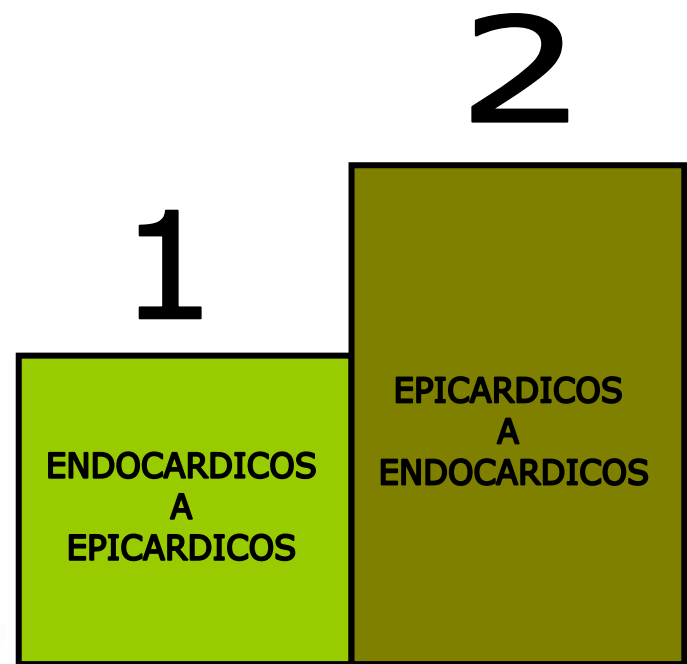




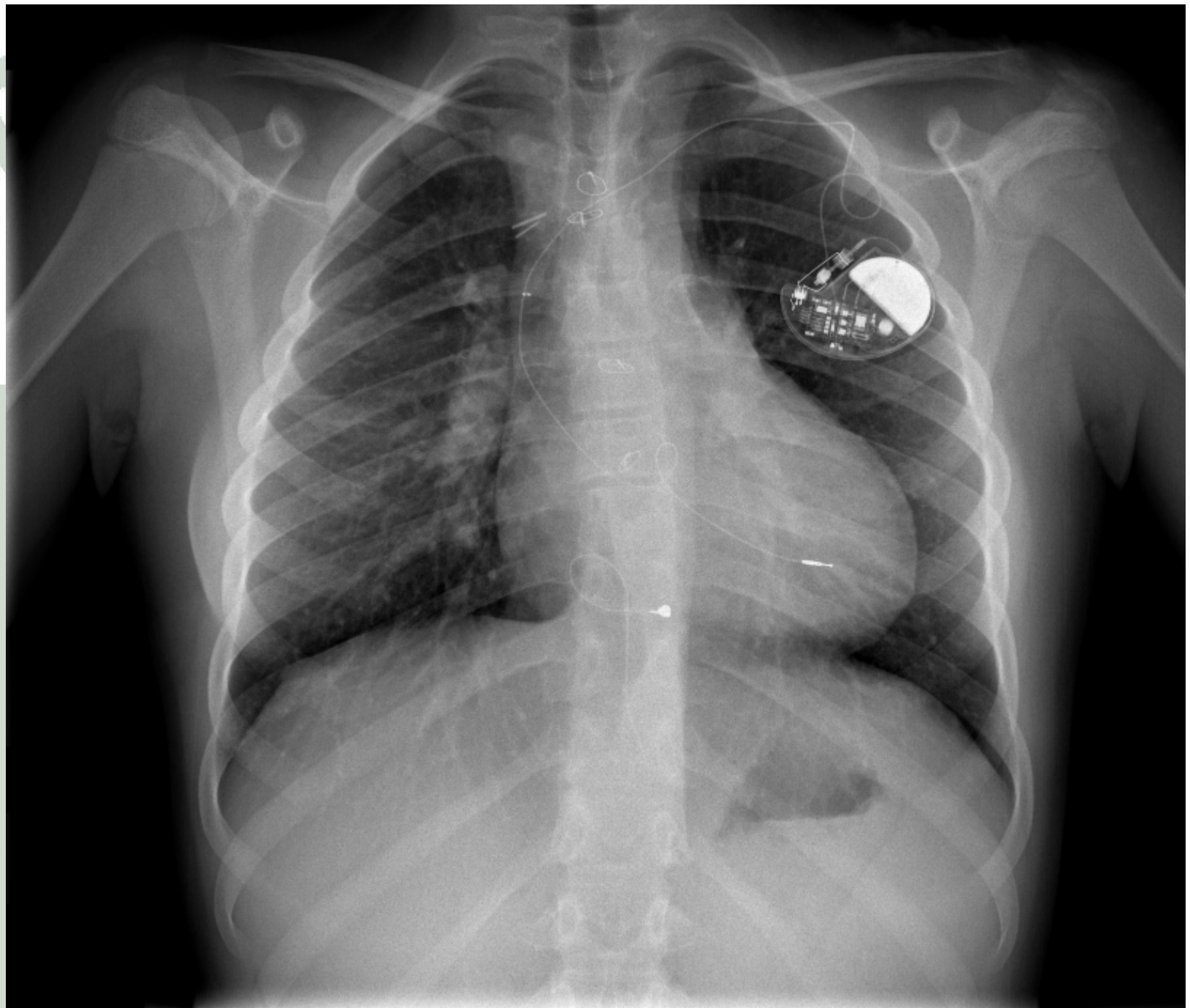
RECAMBIOS

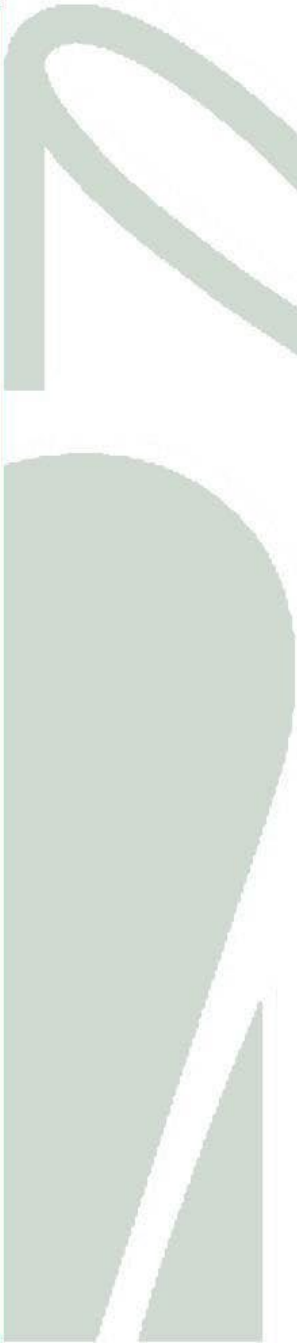
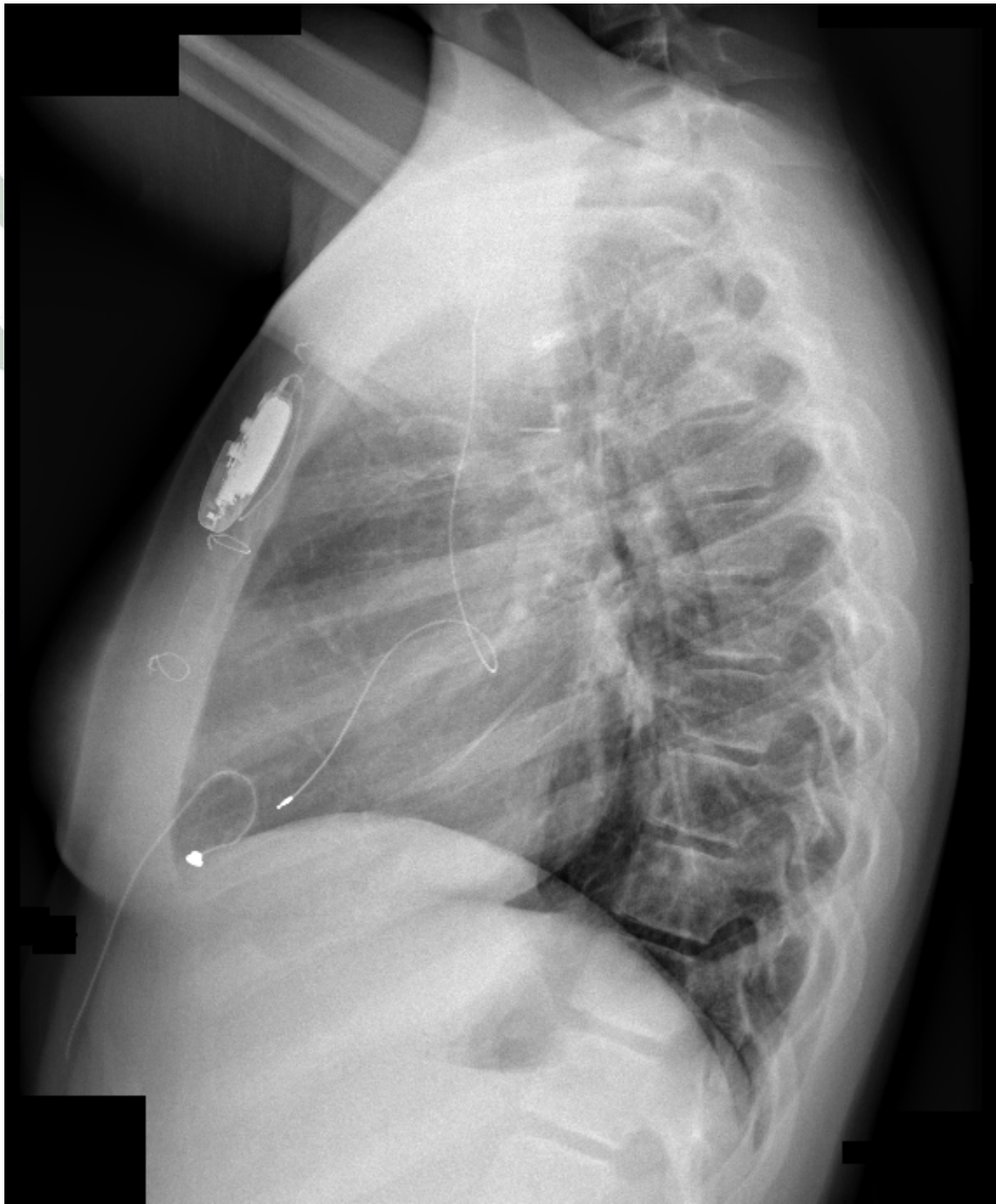


MARCAPASOS



ELECTRODOS







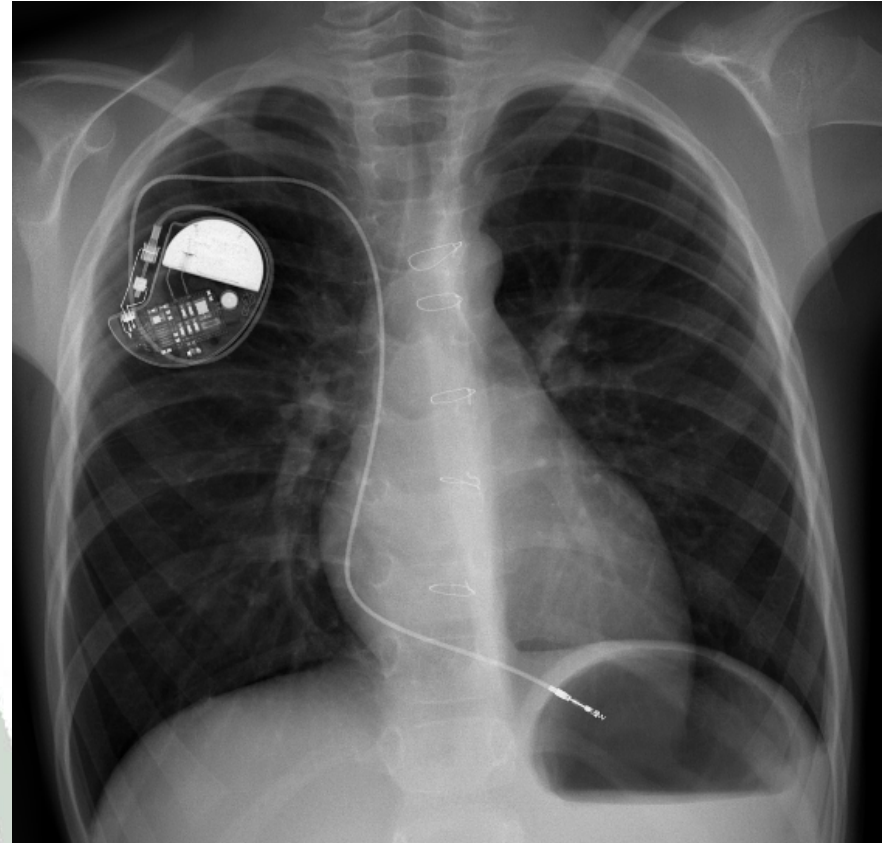
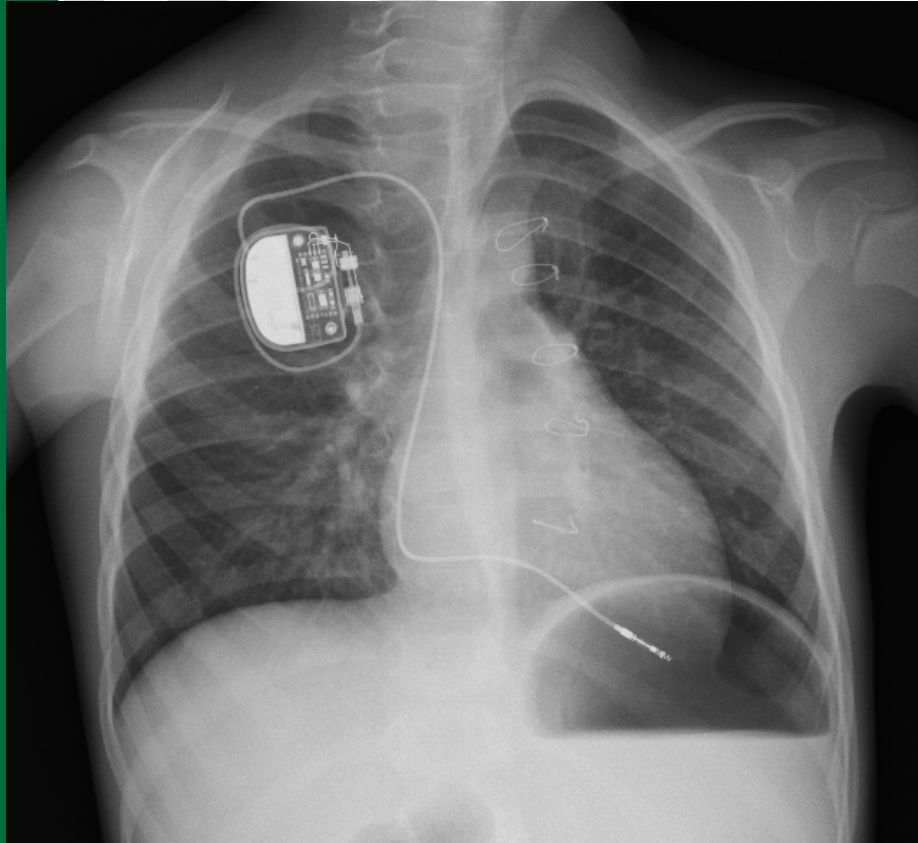
SEGUIMIENTO DE MCP

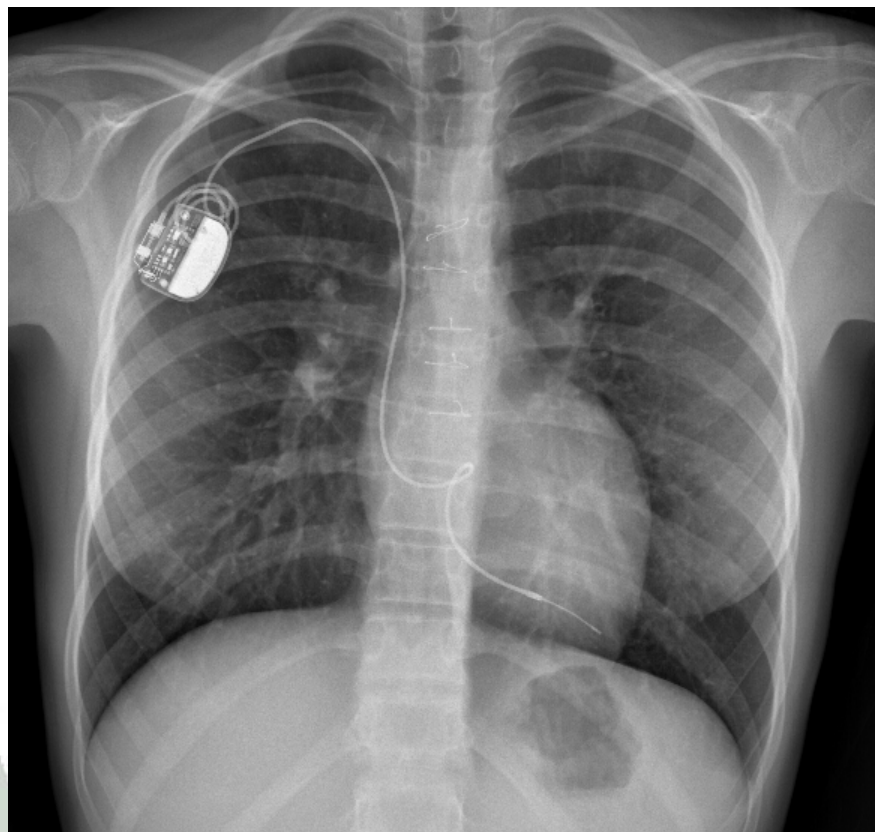
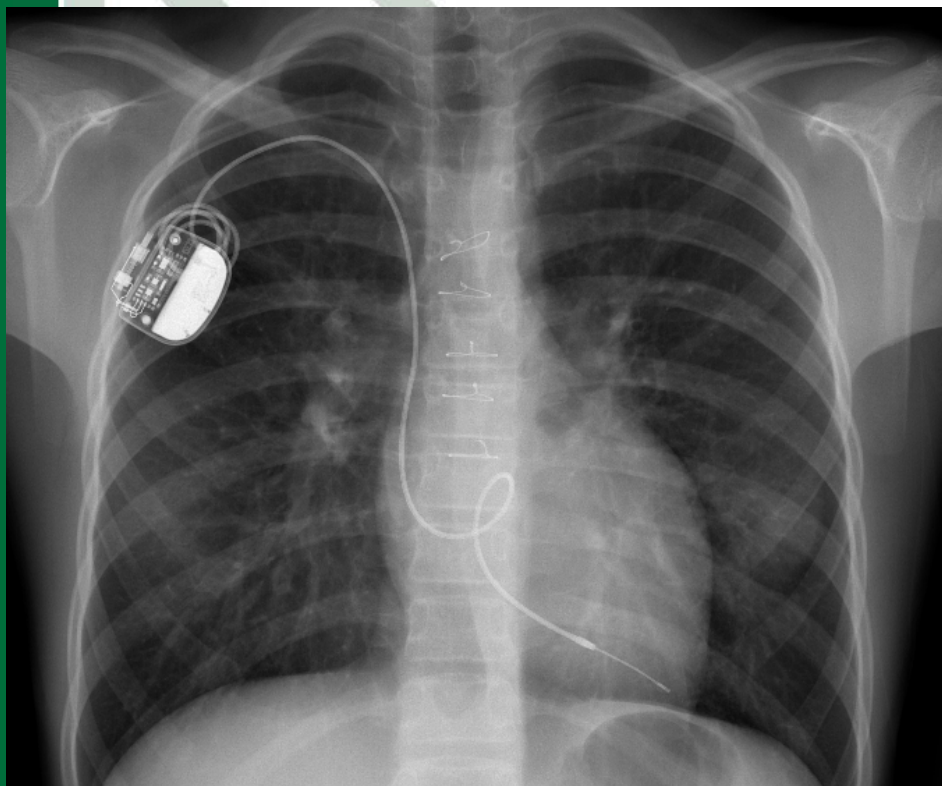
- Interrogación Marcapasos
- Medición de Umbrales de Estimulación y Detección
- Estado de la Batería
- Impedancia de Electrodo
- Programación

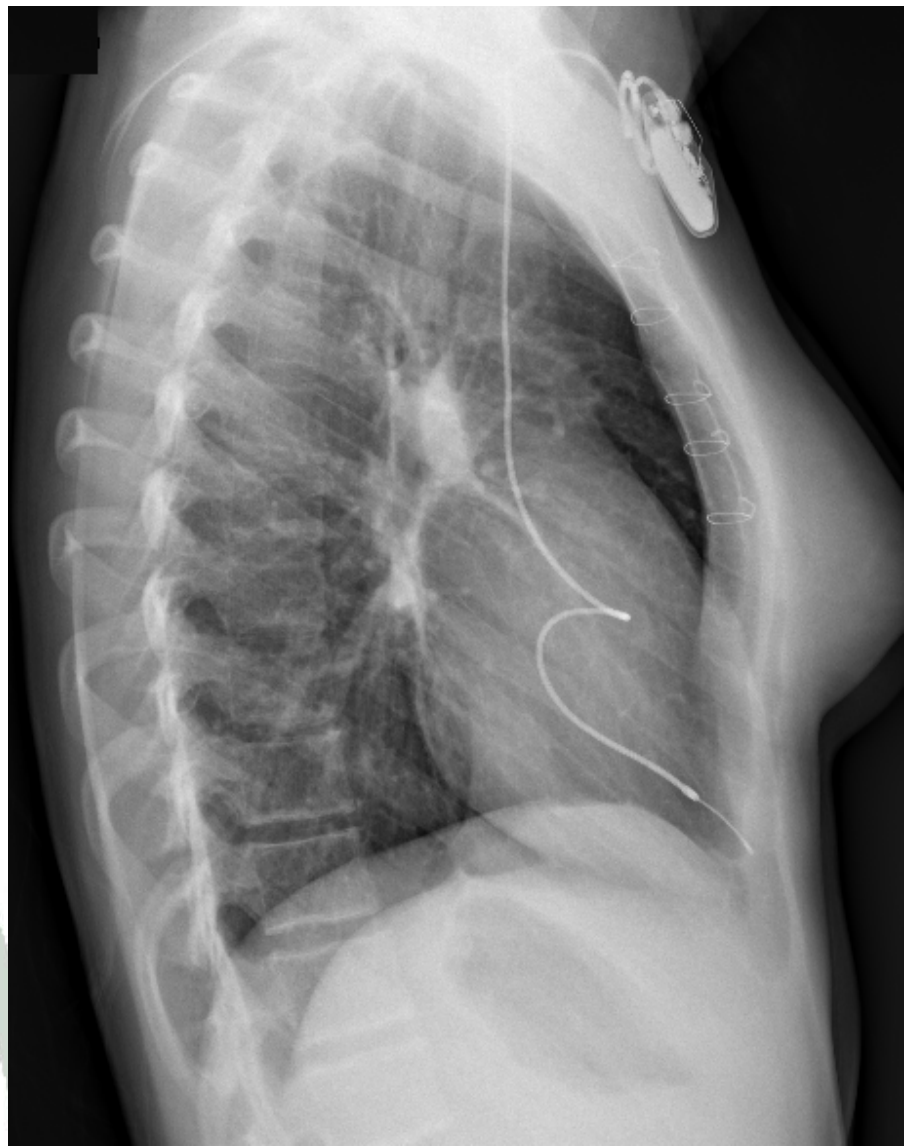
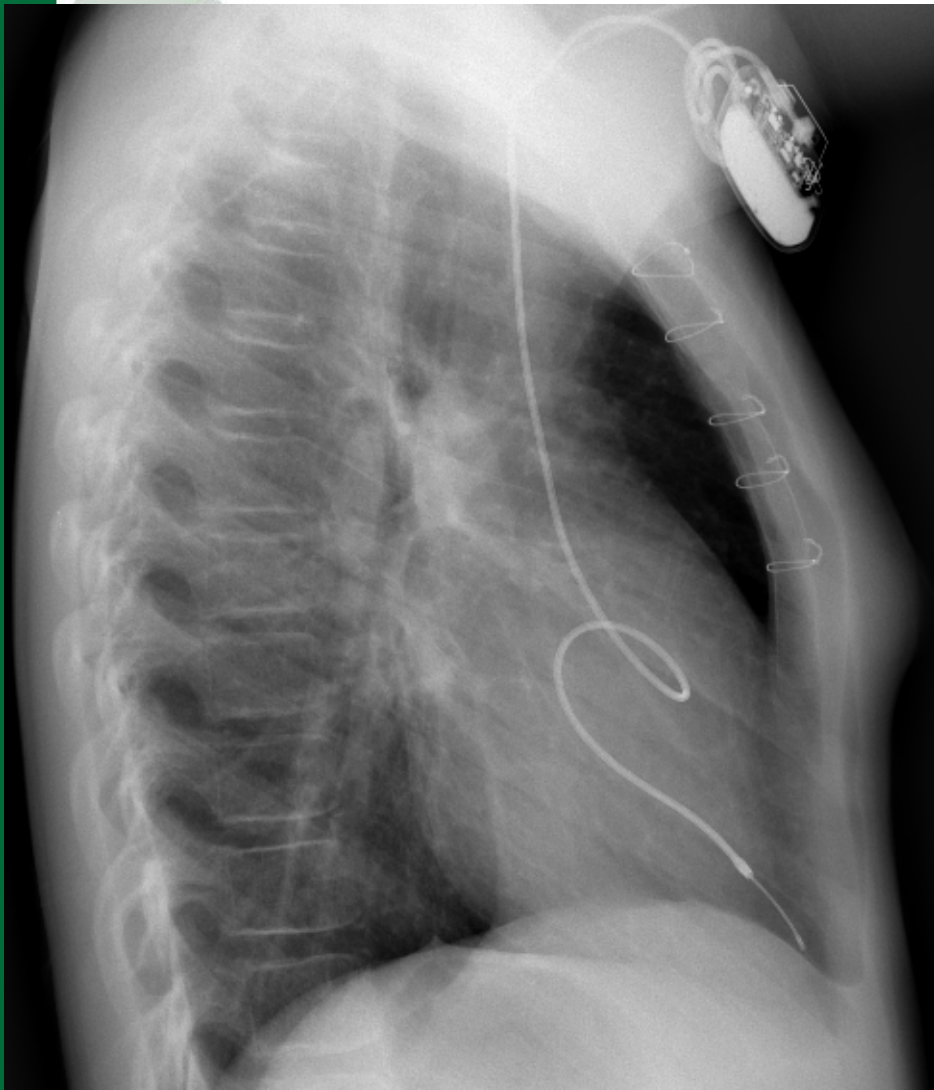


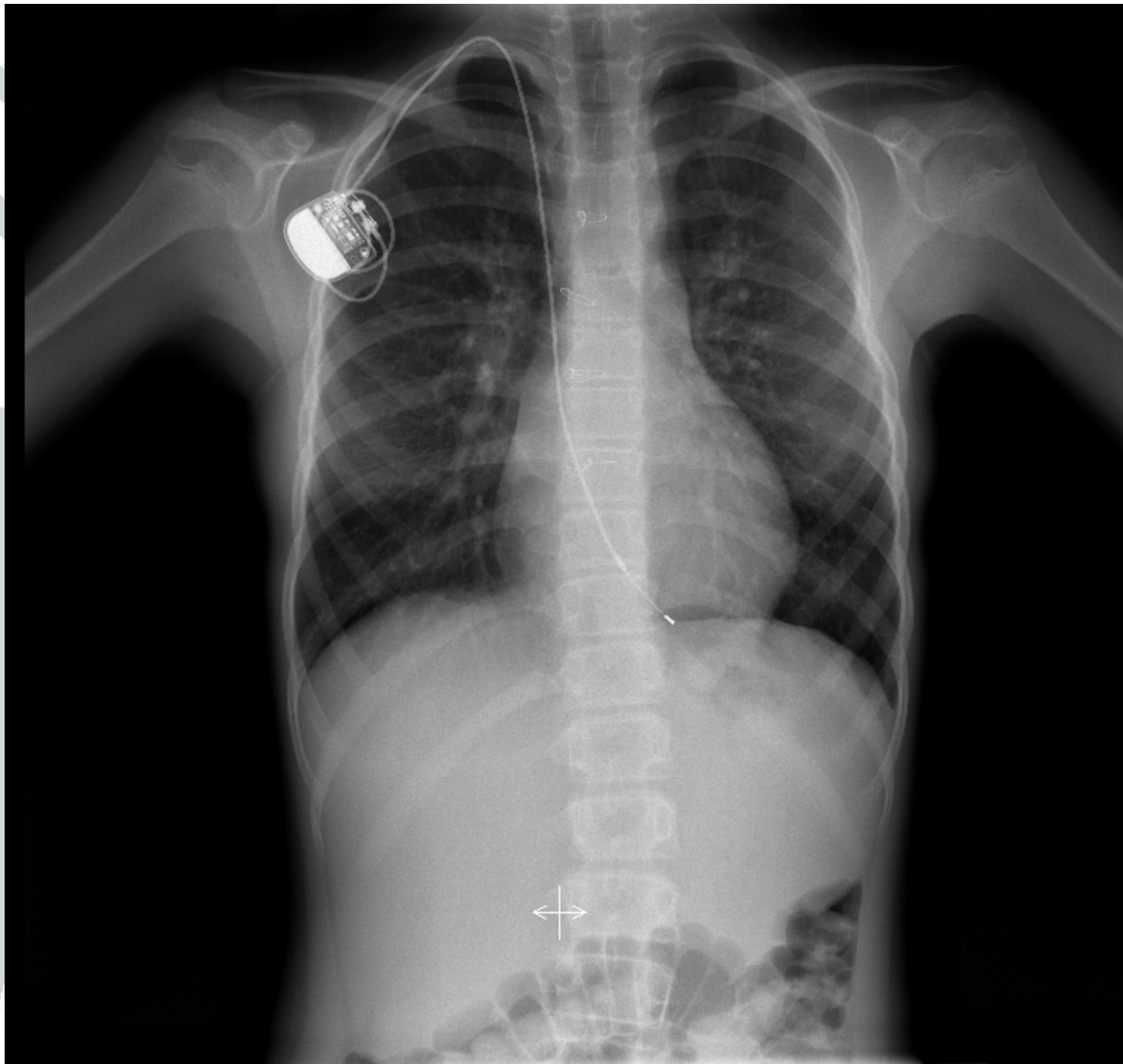
CONTROLES ESPECIALES

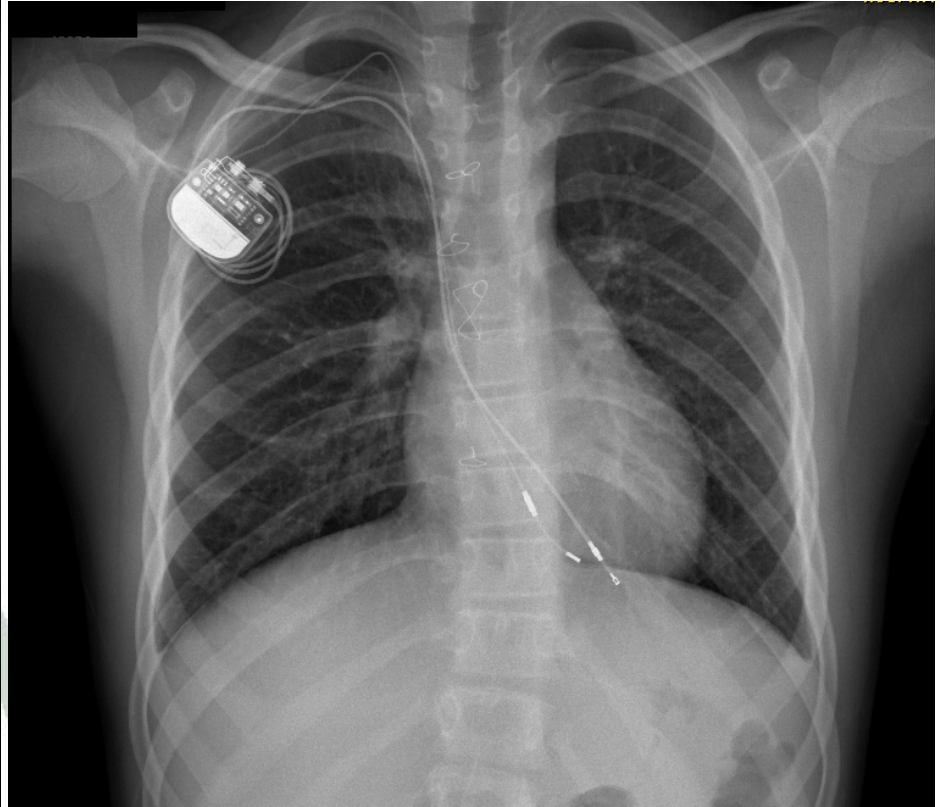
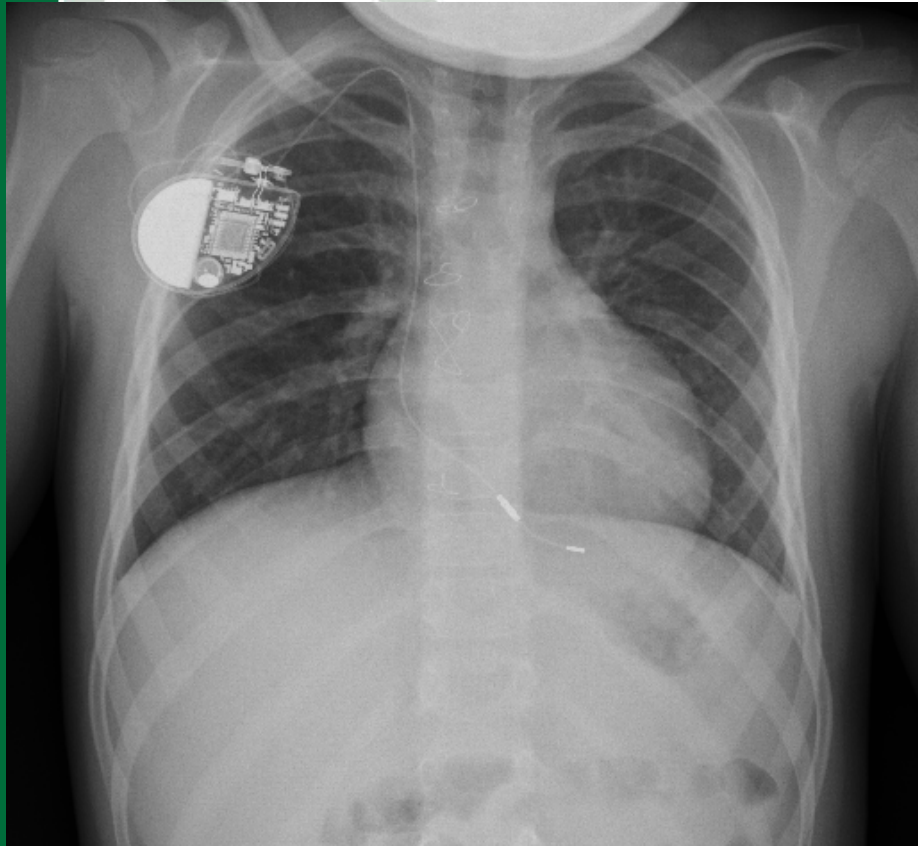
- Controles cada 6 meses
- RX Tórax (según crecimiento)
- Seguimientos por Cardiólogo

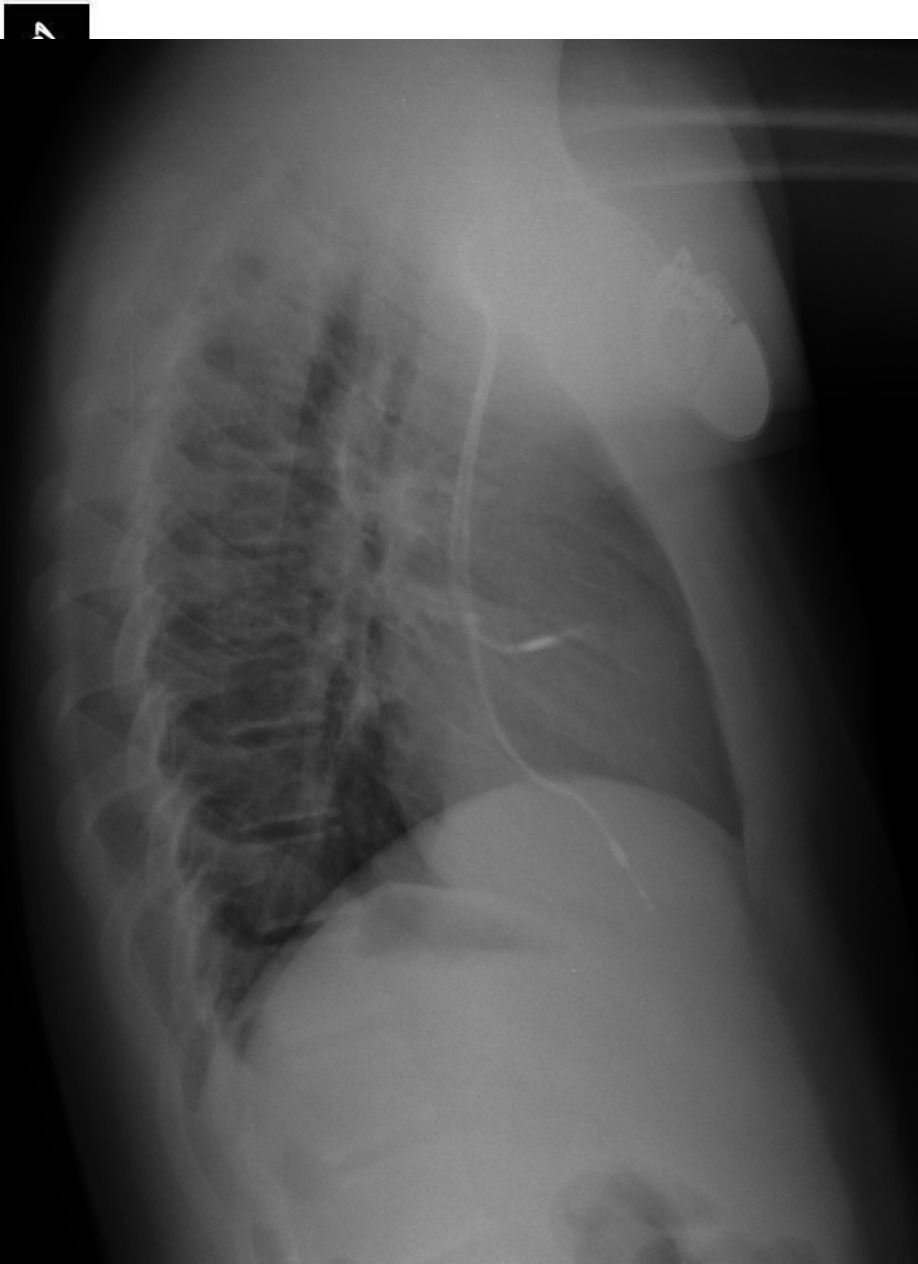








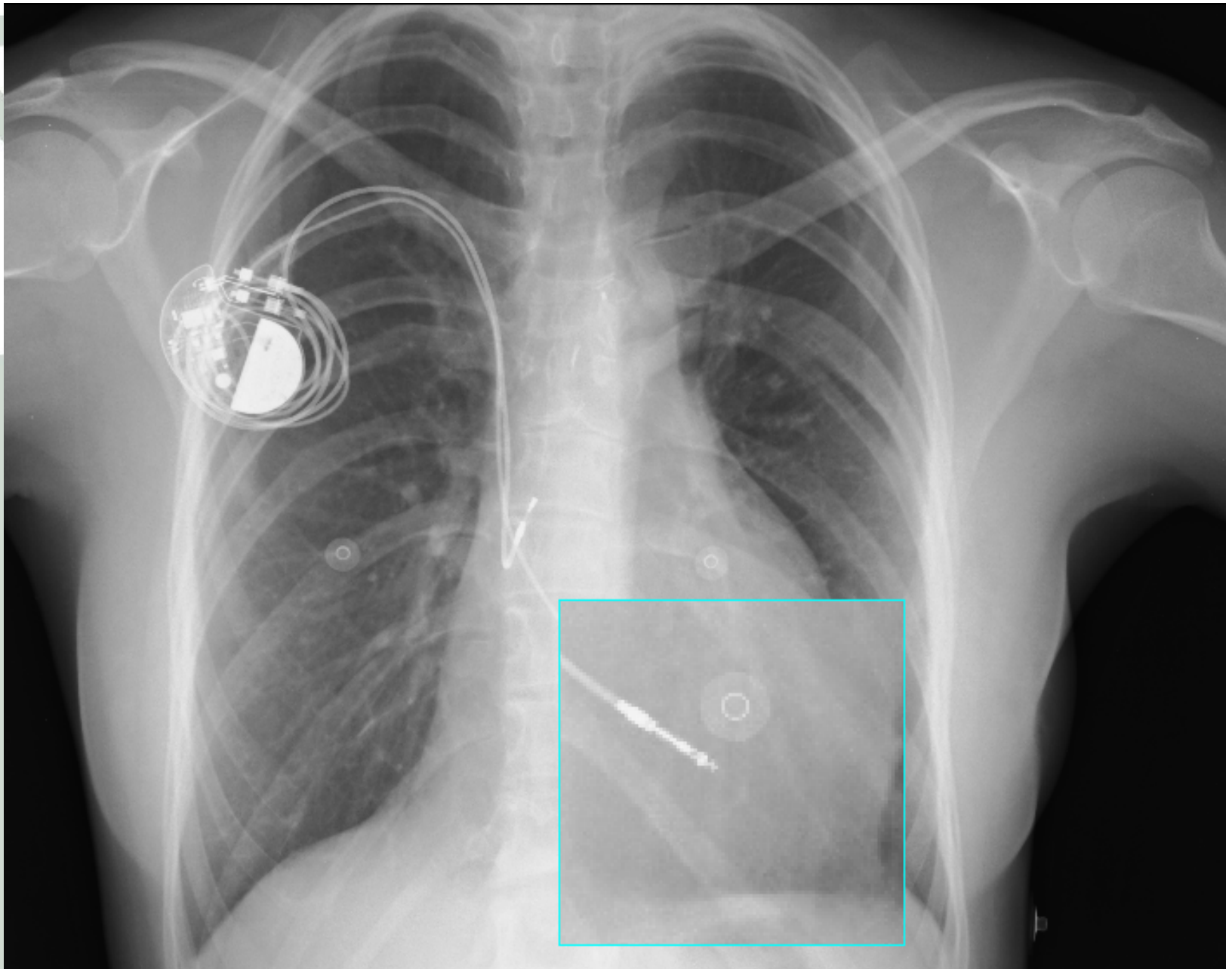






COMPLICACIONES

- Pericarditis (1)
- AVC (1)
- Trombosis Extremidad Inferior (1)
- Endocarditis (2)
- Desplazamiento de Electrodo (1)





CONCLUSIONES (1)

- Seguimientos más frecuentes
 - Por la edad
 - FC “varia según edad”
 - Elongación de electrodo (???)
 - Resincronización (Upgrade)

- **Atención a los Padres**

- Información adecuada

+

- Información personalizada



SEGURIDAD

CONCLUSIONES (2)

BIENESTAR

Y

COMPLICIDAD

